



The key to effective public safety is "communication" -- both within your organization and out to the public.

The use of GIS - Geographic Information Systems - has evolved into being a key ingredient to completing the proper communication loop. Providing a spatial perspective for an emergency situation has proven very beneficial to Police, Fire, and E-911 applications.

W.A.R.N. offers services to assist your organization in maintaining up-to-date GIS information, such as GIS Data Conversion, GPS Data Collection, and professional user GIS Training for every application including tax maps, facility maps, public works mapping as well as public safety

W.A.R.N (Wide Area Rapid Notification)

With "rapid notification" in mind, W.A.R.N. partnered with the leading web-based ESRI GIS Service Providers to develop a Geographic Rapid Mass Notification System. The resulting W.A.R.N. GeoPowered product gives the emergency user the ability to geographically draw an area on a map and quickly spawn mass emergency notifications - based on that location or point on the map - calling at a rapid rate up to the phone company's capacity in that area. Emergency situations such as chemical spills, severe weather alerts, missing children, and growing uses for homeland security are just a few growing uses of this powerful system.

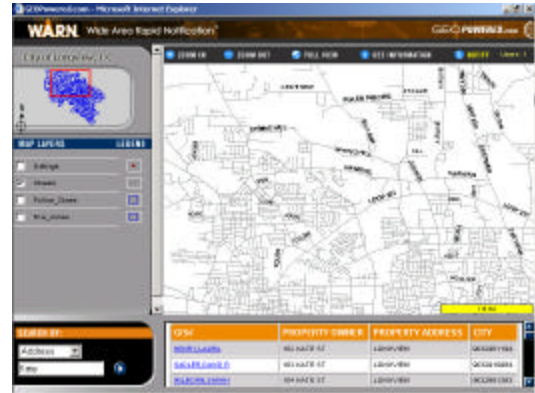
Government and Public Safety

Communication technology has advanced rapidly over the years, and recently the newest tools by W.A.R.N. have been placed in combination with GeoPowered to represent the most powerful GIS mapping and notification package ever made available to governmental entities and public safety organizations.

With W.A.R.N. GeoPowered, you extend your investments in live continuity of operations, disaster recovery, and emergency management systems - by integrating "map-on-the-fly" flexible and rapid mobilization and public calling tools.

W.A.R.N. GeoPowered creates the ability to manage source data and your critical mapping information layers right from your desktop from a secure web-based login. It lets multiple users have access from any location you specify. By establishing live links to the application, several different managers in different locations can see the data and discuss changes or modifications in real time.

W.A.R.N. GeoPowered is a modular product, so W.A.R.N. can integrate with your current planning environment with tools to expand control of your internal and external systems and data sources.

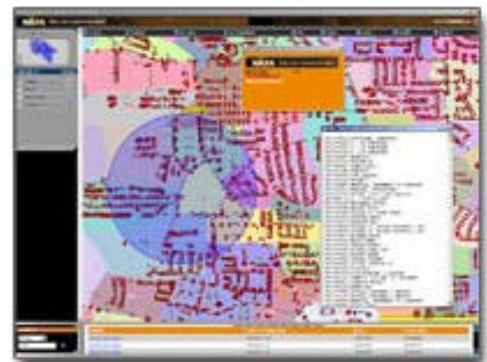


GIS Mapping Services

- ArcGIS Implementation
- GEODatabase Design
- SDE Implementation
- Data Conversion
- Parcel Mapping
- GIS Data Hosting
- Internet GIS Mapping
- ESRI Training

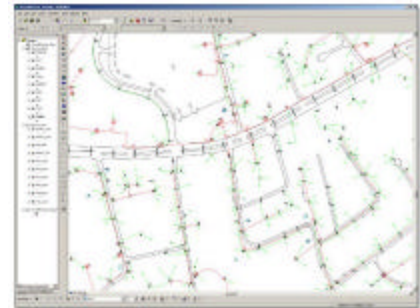
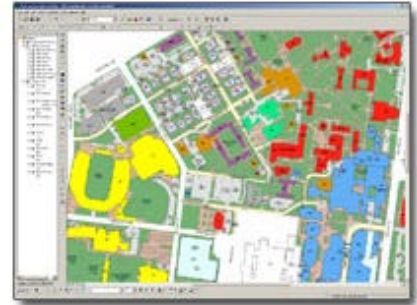
GIS Mapping Products

- ArcGIS Products
- GeoPowered®
- ArcPad Mobile GIS
- Custom Application Development





- **University Mapping Services** W.A.R.N. GeoPowered is used by U.S. higher educational facilities like the Vanderbilt University mapping application (at right) for managing building facilities, personnel, students, events and many other needs every day. Notifications and alerts are contextually-based using our GIS mapping and messaging engine, providing the right information, to the right person, at the right time.
- **Public Works Mapping – Utilities** W.A.R.N. GeoPowered delivers critical mapping applications for Public Works and Utilities like their water main and hydrant mapping (at right). During an outage being managed by the utility personnel, there can be instant updating and changing of mapping and notification parameters as the event or conditions warrant. Those at all affected levels – managers, employees, customers, and others -- get needed support to know and react to any particular situational conditions in real time throughout the event occurrence.
- **Putting the Power To Work For You** When implementing GIS technology it is vital to utilize and combine the newest solutions in both office and field management systems. We can assist you with services that will provide the latest in GIS technology and facility management. Services such as GPS field data collection, CAD to GIS data conversion, customer billing and GIS integration, GEOdatabase migration and Authorized GIS & GPS training. Let us provide the GIS expertise to implement your GIS system in an efficient and cost-effective manner allowing you to focus more on your daily tasks.
 - **Immediate Availability** with no hardware, software, implementation, or maintenance cost.
 - **Reliable** service through W.A.R.N.'s professionally managed ASP environment.



Key Business Continuity Benefits:

- Speeds notification processes, reaching more people faster.
- Automates notification tasks quickly and easily, saving time and resources.
- Allows message targeting to specific groups.
- Facilitates resource sharing among agencies.
- Utilizes existing communications devices.
- Improves community communication and inbound response.
- Relieves stress of overburdened communications personnel.
- Easily update public phone listings.
- Operating system and platform independence allows flexibility.

W.A.R.N. GeoPowered is . . .

- ✓ • Immediate
- ✓ • Efficient
- ✓ • Specific
- ✓ • Automated
- ✓ • Intelligent
- ✓ • Flexible
- ✓ • Powerful

